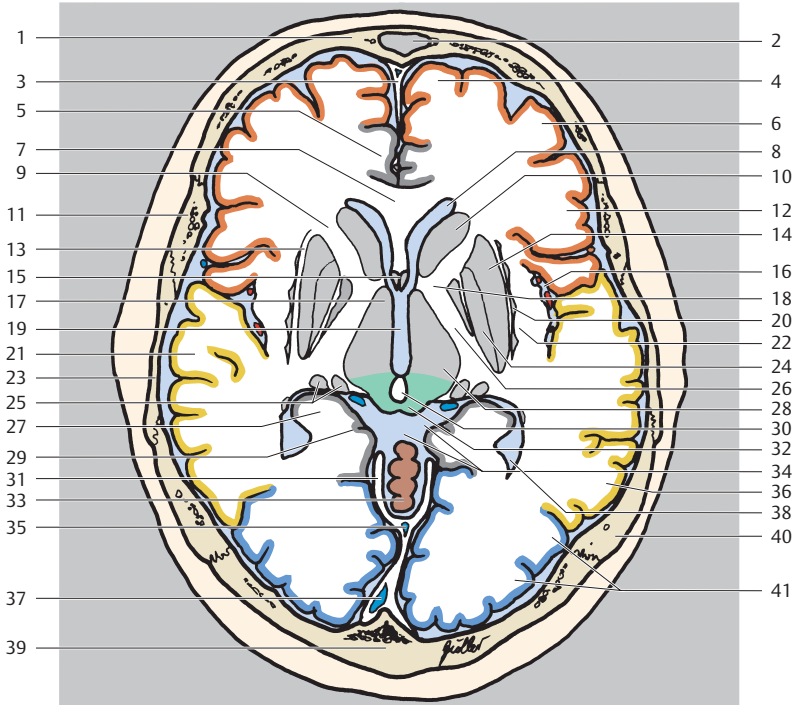


- Frontallappen
- Temporallappen
- Okzipitallappen
- Zerebellum
- Mesenzephalon



- | | |
|---------------------------------------|---|
| 1 Os frontale | 22 Capsula extrema |
| 2 Sinus frontalis | 23 Os temporale |
| 3 Falx cerebri | 24 Globus pallidus |
| 4 Gyrus frontalis superior | 25 Corpus geniculatum |
| 5 Gyrus cinguli | 26 Capsula interna (Crus posterius) |
| 6 Gyrus frontalis medius | 27 Hippocampus |
| 7 Corpus callosum (Genu) | 28 Thalamus |
| 8 Seitenventrikel (Vorderhorn) | 29 Gyrus parahippocampalis |
| 9 Capsula interna (Crus anterius) | 30 Corpus pineale (verkalkt) |
| 10 Nucleus caudatus (Caput) | 31 Tentorium cerebelli |
| 11 Os parietale | 32 Lamina quadrigemina (Colliculus) |
| 12 Gyrus frontalis inferior | 33 Vermis cerebelli |
| 13 Capsula externa | 34 Cisterna laminae quadrigeminae
bzw. ambiens |
| 14 Putamen | 35 Sinus rectus |
| 15 Septum verum
(praecommissurale) | 36 Gyrus temporalis medius |
| 16 Inselzisterne | 37 Sinus sagittalis superior |
| 17 Hypothalamus | 38 Seitenventrikel (Trigonum) |
| 18 Capsula interna (Genu) | 39 Os occipitale |
| 19 III. Ventrikel | 40 Os parietale |
| 20 Clastrum | 41 Gyri occipitales |
| 21 Gyrus temporalis superior | |