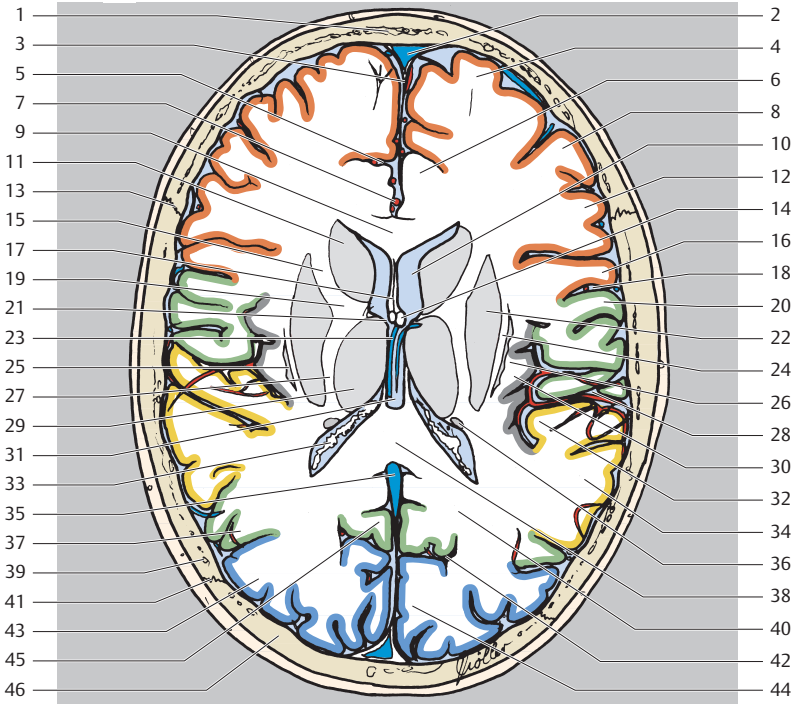


- Frontallappen
- Temporallappen
- Parietallappen
- Okzipitallappen

- |   |  |
|---|--|
| <ul style="list-style-type: none"> <li>1 Os frontale</li> <li>2 Sinus sagittalis superior</li> <li>3 Falx cerebri</li> <li>4 Gyrus frontalis superior</li> <li>5 Sulcus cinguli</li> <li>6 Gyrus cinguli</li> </ul> | <ul style="list-style-type: none"> <li>7 A. pericallosa</li> <li>8 Gyrus frontalis medius</li> <li>9 Corpus callosum, Genu</li> <li>10 Ventriculus lateralis, Cornu frontale</li> <li>11 Caput nuclei caudati</li> </ul> |
|---|--|



- |  |  |
|--|--|
| 12 Gyrus frontalis inferior            | 29 Thalamus  |
| 13 Sutura coronalis                    | 30 Insula  |
| 14 Fornix (Columna)                    | 31 III. Ventrikel (Recessus suprapinealis)                                 |
| 15 Capsula interna (vorderer Schenkel) | 32 Gyrus temporalis transversus Heschl-Querwindung                         |
| 16 Gyrus praecentralis                 | 33 Plexus choroideus im Trigonum des Hinterhorns des Ventriculus lateralis |
| 17 Cavum septum pellucidum             | 34 Gyrus temporalis superior   |
| 18 Sulcus centralis                    | 35 V. cerebri magna  |
| 19 Capsula interna (Genu)              | 36 Cauda nuclei caudati  |
| 20 Gyrus postcentralis                 | 37 Gyrus angularis   |
| 21 Foramen interventriculare (Monroi)  | 38 Corpus callosum, Splenium   |
| 22 Putamen                             | 39 Os parietale  |
| 23 V. cerebri interna                  | 40 Forceps occipitalis (major)   |
| 24 Capsula externa                     | 41 Sutura lambdoidea   |
| 25 Claustrum                           | 42 Sulcus parietooccipitalis   |
| 26 Capsula extrema                     | 43 Gyri occipitales  |
| 27 Capsula interna (hinterer Schenkel) | 44 Cuneus  |
| 28 Sulcus lateralis (Fissura Sylvii)   | 45 Praecuneus  |
|  | 46 Os occipitale   |