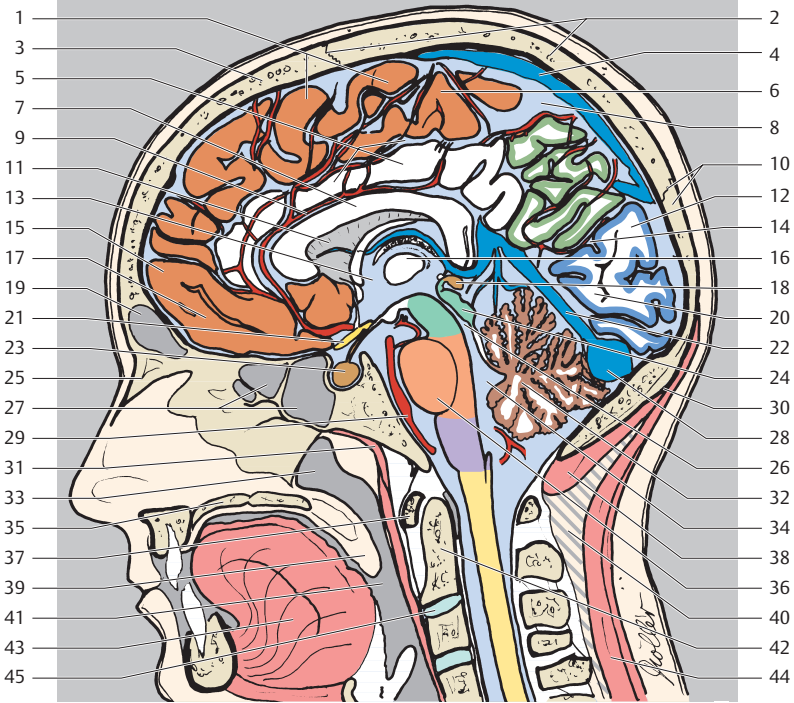


- Frontallappen
- Parietallappen
- Okzipitalappen
- Zerebellum
- Mesenzephalon
- Pons
- Medulla oblongata

- 1 Gyrus frontalis superior
- 2 Os parietale und Sutura coronalis
- 3 Os frontale
- 4 Sinus sagittalis superior
- 5 Gyrus und Sulcus cinguli
- 6 Gyrus praecentralis
- 7 Corpus callosum (Genu)



- | | |
|---|---|
| 8 Falx cerebri im Interhemisphärenspalt | 26 Aquädukt |
| 9 A. pericallosa | 27 Sinus ethmoidalis und Sinus sphenoidalis |
| 10 Os occipitale und Sutura lambdoidea | 28 Confluens sinuum |
| 11 Septum pelucidum | 29 A. basilaris |
| 12 Cuneus | 30 Protuberantia occipitalis externa |
| 13 III. Ventrikel | 31 M. constrictor pharyngis |
| 14 Sulcus parietooccipitalis | 32 Kleinhirn |
| 15 Frontalpol | 33 Pharynx, Pars nasalis |
| 16 Adhaesio interthalamica | 34 IV. Ventrikel |
| 17 Gyrus rectus | 35 Palatum durum |
| 18 Epiphyse | 36 Pons |
| 19 Sinus frontalis | 37 Atlas, Arcus anterior |
| 20 Gyrus lingualis | 38 M. rectus capitis posterior minor |
| 21 N. opticus | 39 Uvula |
| 22 Sinus rectus | 40 Lig. nuchae |
| 23 Hypophyse | 41 Oropharynx (Pharynx, Pars oralis) |
| 24 Lamina tectalis [quadrigemina] (Vierhügelplatte) | 42 Dens axis |
| 25 Os nasale | 43 Zunge |
| | 44 M. semispinalis capitis |
| | 45 Bandscheibe (C2/C3) |