

# Thieme Teaching Assistant Anatomy

## A State-of-the-art Anatomy presentation tool.

Thieme Teaching Assistant Anatomy

Home My Account Quick Tips Demo Register Log In

Home > Thieme Teaching Assistant Anatomy > Head & Neck > Orbit & Eye > Orbit & Eyelid > Fig. 35.15

**Figure Information**

Fig. 35.15  
**Lacrimal apparatus**  
Right eye, anterior view.  
Removed: Orbital septum (partial).  
Divided: Levator palpebrae superioris (tendon of insertion).  
Illustrator: Karl Wesker  
From: Atlas of Anatomy, 2nd ed.

**Image Control**

**Image**

Navigate

Zoom

**Labels and Leaders**

Labels  On  Off

Leaders  On  Off

Label Size

Language)

IP: 91.208.107.37 / LID: 0 [Return to Top](#)

Thieme © Copyright 2016, Thieme Medical Publishers, Inc. All Rights Reserved  
Terms of Use | Privacy Policy | Disclaimer | Find Us on Facebook

Request  
a free trial:  
[www.thieme.com/tta](http://www.thieme.com/tta)

Featuring 2,400+ full-color illustrations  
Ideal for: Presentations • Course materials • Class handouts • Review



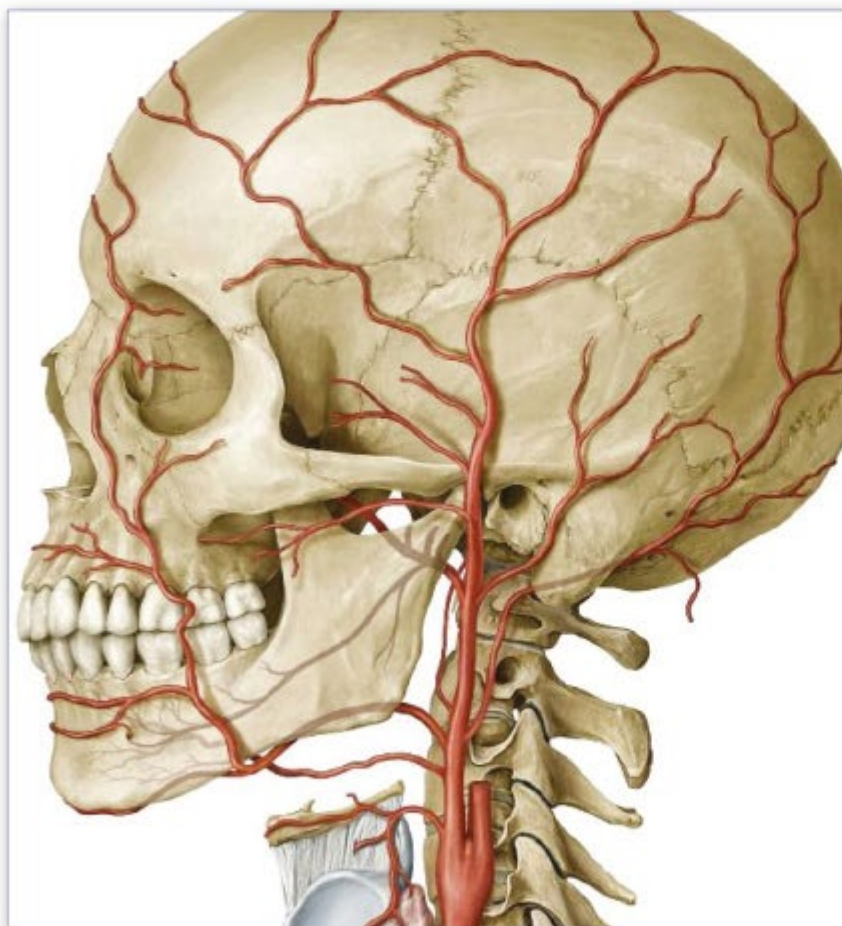
# Thieme Teaching Assistant Anatomy provides charts, and high-resolution clinical images for Anatomy

Lecturers can incorporate dynamic visuals into their presentations and course packs to present complex concepts with unprecedented clarity and to enhance and reinforce their students' knowledge. Students can use the clear, full-color images for review, study, and self-assessment.

The Thieme Teaching Assistant Anatomy is also an ideal companion to MedOne Education, the online destination for knowledge in medicine and related basic sciences.

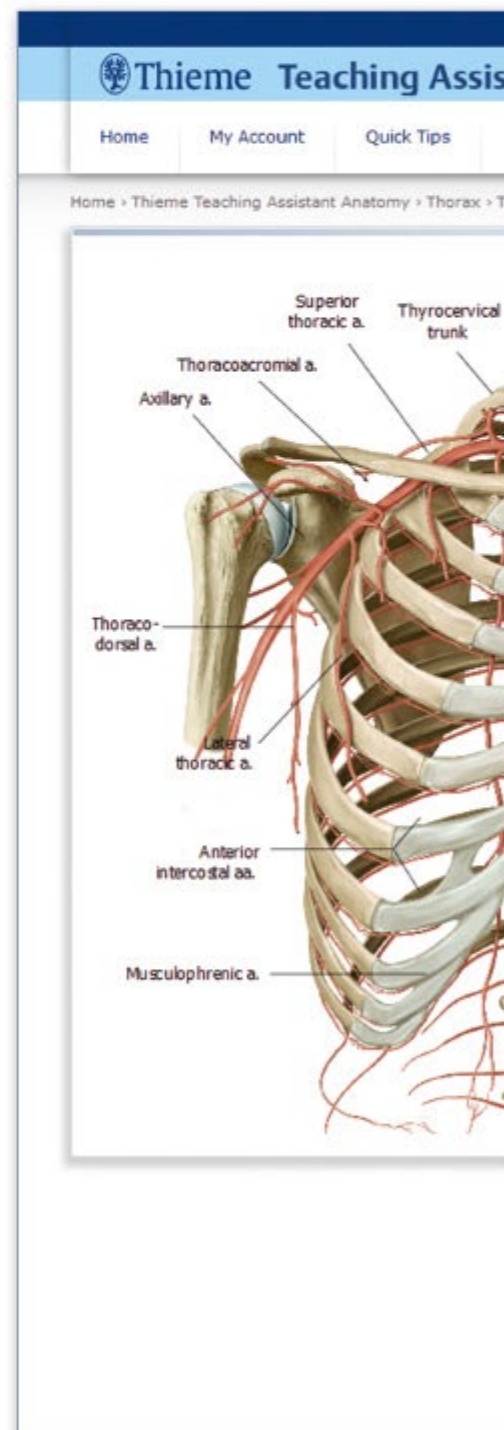
## Thieme Teaching Assistant Anatomy

features every exquisite, full-color image from Gilroy et al.'s *Atlas of Anatomy* and additional images from Baker et al.'s *Head and Neck Anatomy for Dental Medicine* – over 2,400 in total.



### Users can:

- Turn labels and leader lines on or off to prepare study guides and tests
- Choose between English or Latin nomenclature





# es access to high-quality, full-color illustrations, atomy.

The Thieme Teaching Assistant Anatomy allows lecturers and students to:

- Locate specific images with a user-friendly search function
- Zoom in on images and retain the amazing level of clarity
- Export edited images to various file formats, including PowerPoint, PDF, and JPEG
- Access the platform live in the classroom to enhance lectures

The screenshot displays the Thieme Teaching Assistant Anatomy web application. At the top, there is a navigation bar with 'Contact Us | Help | Thieme Publishers' and a search bar labeled 'Enter Search Term'. Below the search bar, there are links for 'Register | Log In'. The main content area features an anatomical illustration of the thoracic wall arteries, labeled with various vessels such as the carotid a., vertebral a., subclavian a., internal thoracic a., 2nd intercostal a., thoracic aorta, posterior intercostal a., dorsal ramus, collateral branch, lateral cutaneous branch, medial mammary branch, anterior intercostal a., abdominal aorta, and superior epigastric a. To the right of the illustration are four control panels: 'Figure Information' (containing 'Fig. 6.17 Arteries of the thoracic wall Anterior view.', 'Table 6.5', 'Illustrator: Karl Wesker', and 'From: Atlas of Anatomy, 2nd ed.'), 'Image Control' (with 'Image Navigate' and 'Zoom' sliders), 'Labels and Leaders' (with 'Labels' and 'Leaders' toggle buttons and a 'Label Size' slider), and 'Image Management' (with 'Save As' and 'Save In' dropdowns, and 'Save in folder' and 'Save to desktop' buttons).

Search by keyword  
for specific images

Navigate through  
the images in each  
section

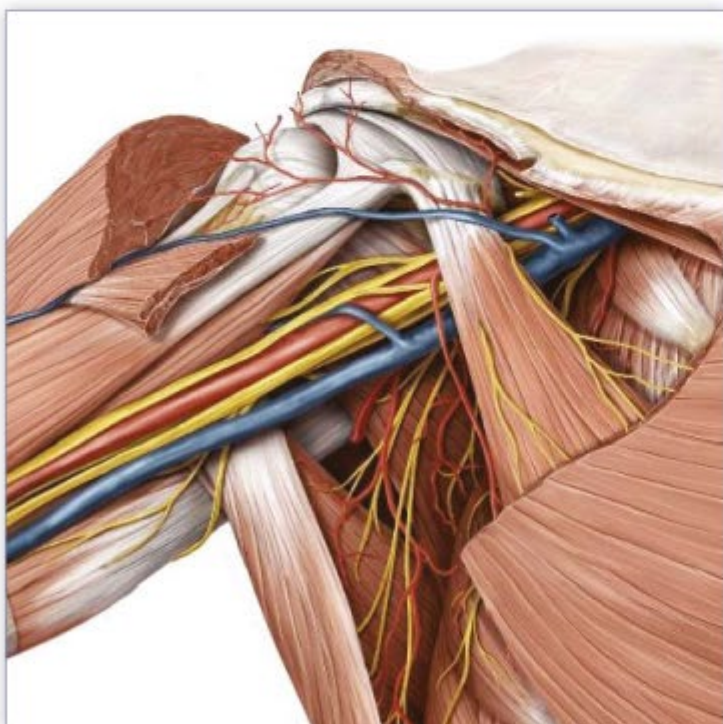
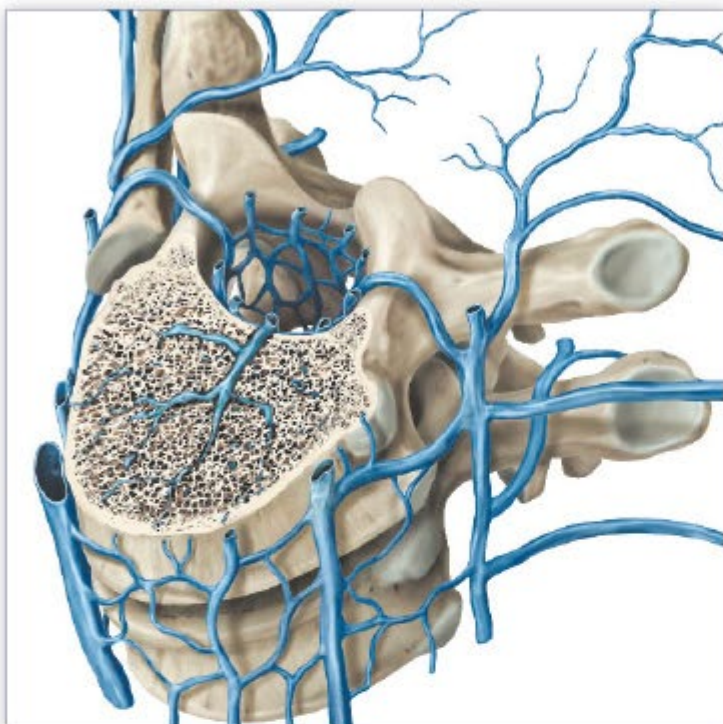
Magnify images

Export/save  
zoomed-in views

Export or save  
images

# Thieme Teaching Assistant Anatomy

A state-of-the-art electronic teaching platform for Anatomy.



## System Requirements

PC: Windows XP or higher

Mac: Mac OS X 10.3 or higher

Display: A display capable of displaying millions of colors and at least 1024 x 768 resolution

Additional Software: Installation of the free Silverlight plugin ([www.microsoft.com/silverlight](http://www.microsoft.com/silverlight)) required for the advanced display and editing features on the site

## Licensing Options

- Flexible agreements with several licensing options
- Web-based product available through the Internet to institutions
- Unlimited campus- or site-wide access controlled through your institution's IP address

For licensing information, please contact:

### The Americas

Thieme Institutional Sales  
E-mail: [esales@thieme.com](mailto:esales@thieme.com)  
Phone: +1-212-584-4695

### Europe, Africa, Asia and Australia

Thieme Institutional Sales  
E-mail: [esales@thieme.de](mailto:esales@thieme.de)  
Phone: +49-711-8931-407

### India

Thieme Institutional Sales  
E-mail: [eproducts@thieme.in](mailto:eproducts@thieme.in)  
Phone: +91-120-455-6600

For more information, please visit:  
[www.thieme-connect.com/ta](http://www.thieme-connect.com/ta)

To access the Thieme Teaching Assistant Anatomy, please visit:  
[www.thiemeteachingassistant.com](http://www.thiemeteachingassistant.com)

Thieme Connect  
The online platform for medical & chemistry knowledge  
E-Books · E-Journals · E-Learning · Clinical Suites · Reference Works



[www.thieme-connect.com](http://www.thieme-connect.com)